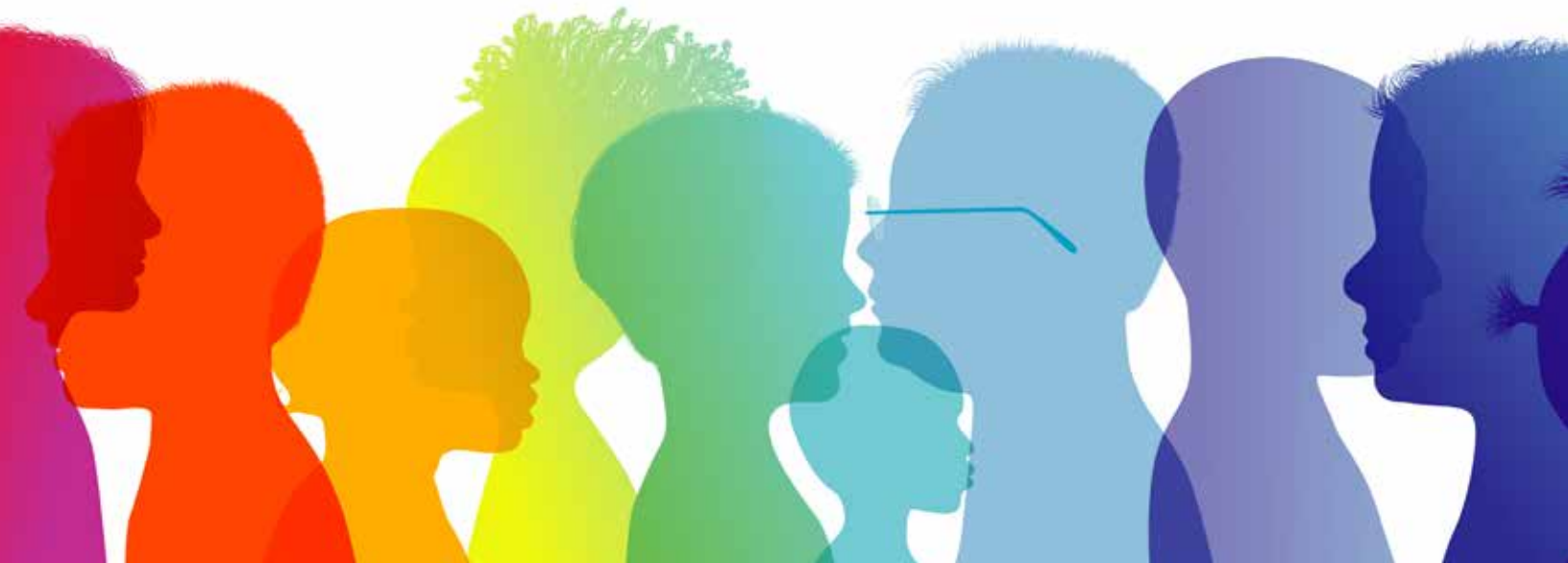


LAKEMARY
CENTER

Impact Report



May 2023

Empowering children and adults with intellectual and developmental disabilities to achieve their individual potential.



TABLE OF CONTENTS

- CEO's Corner
- Board Chair Note
- Capital Campaign
- SASS Initiative
- PRTF Update
- Mountain Movers
- A.I.M. One Year Later
- Shared Living Connections
- Golf Classic
- Advocacy Day at the Capitol
- Thank You Volunteers!

CEO's Corner

A NOTE FROM KIRK

It's difficult to select what we will feature in each of our Impact reports. There are so many good things taking place all over the organization and we must select only a few that we share with you each time. I'm very proud of the work taking place all over the organization and the tremendous efforts our employees are putting forth to offer high quality care and services for our adults and children. In my 41 years with Lakemary Center, I continue to be amazed at what is taking place here in 2023!

It's a very exciting time as we are watching the new PRTF building going up on our campus in Paola. This is a much-needed building for our children's program and will offer some of the finest care in the country for 49 children. Many of our existing buildings are over 40 years old and quite frankly, they have seen better days. We are looking forward to November when we are able to move in – it will be a very special day for our staff, the community, our donors and our children and their families.

You are going to hear about a program that we are pioneering for the disability community here at Lakemary Center. The "SASS" program is something that is going to be needed today and well into the future as more adults with special needs are aging. Tracy Price and her team of experts have developed a program that will support many individuals and families. There is a great article in this report that highlights the program.

It is always an honor to publish the Impact Report knowing that it gives so many of our supporters the opportunity to learn more about what is taking place here at Lakemary Center. Please reach out with any questions you may have – or just to say hello!



KIRK DAVIS, M.S.
PRESIDENT/CHIEF EXECUTIVE OFFICER

A NOTE FROM: Mike Sanders

BOARD CHAIR

This Impact report will hopefully provide you with a window into the work being done so far this year at the Lakemary Center. This report is full of articles related to our children's program, our adult program and opportunities that work across the whole organization. One of the greatest achievements for Lakemary Center this year has been the construction on our new Psychiatric Residential Treatment Center building on the Paola campus. We are seeing steady progress and we are on track to be in the building by November of this year. Please be sure to read the article on the new building and our Capital Campaign, **A Blueprint for Hope.**

Kirk and his team have continued to be very focused on recruitment and retention of high-quality employees. Several initiatives have been taken to focus on attracting new employees and retaining those who join the organization. I like to remind everyone that our UNITED Strategic Plan states, "people are our greatest asset." Lakemary has put a great deal of effort against this statement in the past year.

Lastly, I want to thank each of you who are part of our Lakemary Center family. Each of you are a vital part of our community and we are grateful for your support and friendship.

My best,

MIKE SANDERS
CHAIR

THANK YOU TO OUR
A BLUEPRINT FOR HOPE GALA
LAKEMARY VISIONARY SPONSORS

Carol and Lonnie King & Family

Dean and Cleta Smith Charitable Fund
Managed by First Option Bank

A BLUEPRINT FOR HOPE GALA **was a big success!**

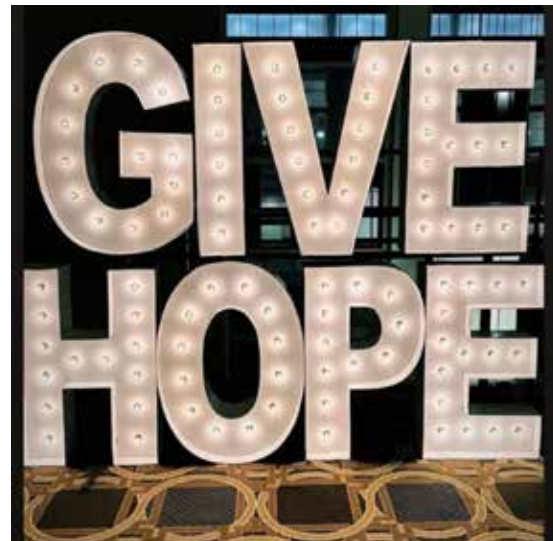
Lakemary Center's A Blueprint for HOPE Gala was a big success raising over \$230,000 for our new building. "The event brought donors who have been with Lakemary for many years and many new donors. It was the first time we've had a Gala in three years due to Covid and we couldn't be more pleased with the event," says Julie Hosley, Creative and Marketing Director. Over 280 guests attended the Gala and enjoyed a delicious meal, entertainment as well as an auction. Great fun was had with a heads and tails game with attendees and the live auction had many exciting moments as well.

The entertainment featured Doug Cameron and his two sons who provided dinner music for our guests. The Cameron family also shared their talents with our adults and children at two private concerts the day before the Gala. Our adults and children were all in awe of the instruments and enjoyed getting the chance to play them. "Doug and his sons were so excited to get to meet the adults and children we support.



For more information on the Blueprint for HOPE Capital Campaign, reach out to Sally Beyers at sally.beyers@lakemary.org or 913.416.5179

It provided great insight into our mission and the work we do at Lakemary," says Sally Beyers, Development Director



THANK YOU to our amazing donors who are featured throughout this Impact Report. We also had an amazing team of staff volunteers this year! "We had people from almost every department join us this year as volunteers and we are so grateful to each of them. Putting on an event always takes lots of extra people. It was also great for our donors to get a chance to meet so many of the people on the Lakemary team. We are truly grateful for our donors and to everyone who volunteered their Saturday to help us this year!" says Teddi Hernandez, Vice President of Marketing and Development.

SASS Initiative

SPECIALIZED AGING AND SUPPORT SERVICES



The Specialized Aging and Support services team is an initiative we started to assess how we can better support those who are moving through the aging process. A focus of the SASS team is to facilitate Aging in place and finding creative ways to support the individuals in their home for as long as we can. We began by offering training to all the direct care professionals called Aging and IDD. This training addresses how the human body ages and how this impacts the day-to-day lives of individuals with intellectual disabilities. From this training, our SASS team initiative shifted to having a larger presence within the organization and in the community.

Within Lakemary, we have a group of DSPs who are our SASS team. They will have specialized training on working with individuals who are aging to include those negative aspects of aging that someone may encounter, from dementia and Parkinson's disease to varying advanced medical needs such as ostomy or catheter care. These DSPs are our resources in the field to step in and lead their peers or assess environments that may need more support.

Our SASS team offers outreach and training within the community. We have completed training at our fellow community partners such as North Point, a long-term care facility in Paola and fellow IDD service providers. This past October, Sara and Anna Mae spoke at the interhab conference to promote our SASS program on a state level. Anna Mae is also on the Johnson County Aging Coalition, which has representatives from KU's center on aging, Johnson County Developmental Supports and Lakemary Center. We organize annual training or resource summits for the Johnson County affiliate network. On May 17th, we have a resource fair that we are focusing on resources for family members who are taking care of a loved one who is aging.

We have found through building this program that Lakemary is paving the way to providing better support for the aging population within the state of Kansas. Our goal for the next year is to expand our network base to provide more outreach.

THANK YOU TO OUR
A BLUEPRINT FOR HOPE GALA
POWERFUL IMPACT PARTNER SPONSORS

Joan Horan
Weinberg Family Legacy Fund
Gail and Gary, Rachel and Brian, Leslie and Brad & Blake

PRTF Update

PSYCHIATRIC RESIDENTIAL TREATMENT FACILITY



The construction of our new Psychiatric Residential Treatment Facility is well under way! We are so excited to see the progress that has been made so far. "Seeing the progress on the building gives me goosebumps every step of the way! Watching it start to move upwards day after day reminds me that we are that much closer to realizing the dream." says Cherie Duffy, Lakemary Center's Chief Financial Officer. "I'm looking forward to providing our kids with a new, state of the art, beautiful place they can call home! A place they can feel safe, secure, and know they are the reason we worked so hard for this."

The PRTF will be home to 40 children and will include therapy rooms, a library and other therapy departments.

The building is on schedule to be completed by the end of this year with phase 2 starting next year. Keep your eyes out for more pictures of the progress!



MOUNTAIN Movers!

UNITED TO THE SUMMIT

We are excited to announce a new program to recognize our employees! This new employee program will recognize a Lakemary team member who is "Moving Mountains" Employees will nominate other employees!

One Mountain Mover each month will be selected from each of the following:

- Adult Program
- Adult Direct Care
- Children's Program
- Children's Direct Care
- Administration

On the 1st of each month our Lakemary Mountain Movers will be announced. The five Mountain Movers selected will also have the opportunity to have lunch with our President/CEO, Kirk Davis during the month and will also be presented with a Lakemary gift. Each Mountain Mover will also be highlighted on the TVs, posters, social media, employee newsletter and during the quarterly UNITED to The Summit meetings.

Our hope is that team members will recognize other team members for their efforts... it takes all of us to move mountains within Lakemary. The children and adults we support will always be the reason why we all continue to climb, reaching the top of the summit is the smiles we see on their faces each and every day, knowing we each did our best! Every employee, every position is important. One family, one Lakemary.



THANK YOU TO OUR
A BLUEPRINT FOR HOPE GALA
DIFFERENCE MAKER SPONSORS

Straub Construction Company, Inc
Doherty Steel
Garmin
Bridget and John Murphy

A.I.M. One Year Later...

POST GRADUATE PROGRAM

At its inception, A.I.M. was a program installed to support children after graduation and prepare them for living within their community. A.I.M. offers valuable hands-on career training and prepares students for their individual vocational opportunities. It was an initiative unlike any that we have offered before or that anyone has for that matter.



One year later, A.I.M. has supported many students and taught them a wide variety of skills to prepare them for jobs in the future such as laminating, copying, mailings, gift wrapping, and many other tasks! Over the last year, A.I.M. has partnered with our adult program to assemble the iconic poppies for veterans and it has been a meaningful experience for both programs.

It is safe to say that A.I.M. has been a success for the organization, but with all new programs we are looking to grow!



The students at A.I.M. would love to be able to partner with more departments, just as they have done with Adults and the poppies, to learn more skills and help where they can. Reach out to Jean Hoyt at Jean.Hoyt@lakemary.org for ways to connect!

SHARED LIVING Connections Program

Over the past several decades, Lakemary Center has been proud to offer foster care for families looking for placement for their adults or children with intellectual and developmental disabilities. As times change however, so do the needs of those we support and the programs we offer them. This year, Lakemary is pleased to announce a new innovative way to support adults in a way that utilizes systems outside of a typical group home.

"Under the new Shared Living Connections Program, Lakemary will have another menu item to offer families looking for support with their loved ones." said Tracy Price at a recent United to the Summit rally. The Shared Living Connections Program gives an option to families to host adults with intellectual and developmental disabilities at their homes to live with them. "As far as the impact, it will definitely increase their range of options as far as where they choose to live. They will have the ability to have a home setting with more individualized support." says Jodi Rivera, the Specialized Foster Care Coordinator at Lakemary Center.

2024 Lakemary Golf Classic



We are excited to announce our highly anticipated **Lakemary Golf Classic** is coming back to Shadow Glen Golf Club October 9th, 2024!

This tournament is shaping up to be bigger and better than ever and we can't wait to share the day with everyone! Mark your calendars now as the year is already flying by!

Please contact Sally Beyers at sally.beyers@lakemary.org or 913.416.5179 to learn how you can reserve your spot now or become one of our sponsors.

Remember - this event always sells out quickly!

ADVOCACY Day

AT THE CAPITOL!

There was a great turnout this year to Interhab's Advocacy Day, An annual event taking place at the Kansas Capitol in Topeka. Over 500 people from all over the state came together to show support for those with intellectual and developmental disabilities and discussed the needs of the community with our legislatures. Later in the day, Governor Laura Kelly of the importance of supporting those in the community.



THANKS Volunteers!

High School Students from St. James Academy came to Lakemary Center at the beginning of April for their annual Day of Service. This marks the second year in a row that St. James has volunteered on Lakemary's campus as last year they painted a gazebo for the adults in Olathe and planted flowers around the campus. This year, they put together spring baskets for the students that Lakemary supports and raked leaves at the front of the school and in the courtyard. "The effort the volunteers have put in has been greatly appreciated and made our job a bit easier."



Together, the volunteers raked up over 30 bags of leaves and put over 40 baskets together. "Having volunteers come to Lakemary and see the work we do is always special. When



you have a group of students come and volunteer who are the same age as some of the students we support and they see the impact they make, it's a cool experience." says Skyler Stevens, the Marketing and Volunteer Coordinator. As spring rolls in, there will be more opportunities for volunteers outside at our ranch and other areas of our campus. If you or your company would like to volunteer, please contact Skyler Stevens at Skyler.Stevens@Lakemary.org or 913.543.3429



CAPITAL CAMPAIGN COMMITTEE

Bill Craig, Co-Chair | Lonnie King, Co-Chair | Mike Sanders | Kirk Davis

Mike Everett | Joan Horan | Carolyn Jacobs | Gayle Richardson

Gail Weinberg | Teddi Hernandez | Cherie Duffy | Sally Beyers

OUR PURPOSE

As a Psychiatric Residential Treatment Facility (PRTF), Lakemary Center provides round the clock care for up to 65 children. Lakemary Center provides therapeutic treatment for children and young adults ages 6-21, who have a dual diagnosis of an intellectual or developmental disability as well as a psychiatric disorder. Children from over 15 states, and as far away as Hawaii and Alaska, come to Lakemary Center for the specialized care we offer.



The children who reside at Lakemary Center receive individual, family and group therapies in addition to a psychiatric assessment that includes medication management. Our caring staff provides 24/7 care and supervision as well as nursing for our children.



In addition, the children attend Lakemary Center's K-12 fully accredited school, along with up to 50 students from surrounding areas who also attend Lakemary Center School to receive specialized educational services.

Our children live together in dormitories that are managed by a team 24/7. The children also receive their meals in our cafeteria with a licensed dietician leading our meal services. The children enjoy on campus activities including playgrounds and a pool. The students also benefit from therapies that are conducted at the Lakemary Center Ranch. They get to interact with therapy animals, learn about gardening and enjoy learning in a beautiful red barn on campus.

Please contact Teddi Hernandez at Teddi.Hernandez@Lakemary.org or Sally Beyers at Sally.Beyers@Lakemary.org for more information on how you can get involved!

MEET OUR Executive Team

Kirk Davis, M.S.
Chief Executive Officer

Cherie Duffy, MAccy
Chief Financial Officer

Teddi Hernandez
*Vice President of Marketing,
Development & Communications*

Jean Hoyt, LSCSW, RPT-S
Vice President of Children's Services

Tracy Price
Vice President of Adult Services

MEET OUR Board of Directors

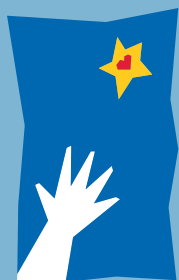
Mike Sanders
Chair

Lydia Marien
Secretary

Gayle Richardson
Treasurer

Jeff Aberdeen
Dr. William Craig
Barry Fink
Joan Horan
Carolyn Jacobs
David Kaseff
Lonnie King

Tim Lang
Nancy Lusk
Molly Meek
Harold Mitts, Jr
Barbara Sipes
Paul Sokoloff
Gary Weinberg



LAKEMARY
CENTER

Lakemary Main Campus
100 Lakemary Dr
Paola, KS 66071

Johnson County Headquarters
15145 S Keeler St
Olathe, KS 66062

Questions or Comments?

Please email Teddi Hernandez, VP of Marketing, Development & Communications
at teddi.hernandez@lakemary.org

913.557.4000 | lakemary.org