



LAKEMARY
CENTER

2024 Impact Report

WWW.LAKEMARY.ORG
PAOLA, KS | OLATHE, KS

just you+me
Our beloved Duo Dog, Alvin



At Lakemary, we are deeply grateful for your unwavering support and generosity. Your commitment to our mission is felt across the entire organization and makes a profound impact on the lives of the hundreds of children and adults we support each year.

Thanks to your support, we can provide essential services and programs that empower individuals with intellectual and developmental disabilities to lead fulfilling lives. Your generosity helps us offer specialized education, therapeutic services, residential care, and community integration programs. Each contribution, no matter the size, plays a crucial role in ensuring that the children and adults at Lakemary receive the highest quality of care and support.

A Community of SUPPORT

We are incredibly fortunate to have a community of support who believes in our mission and shares our vision of a world of inclusion and acceptance for people with intellectual and developmental disabilities.

Transforming Lives TOGETHER:

Your investment in Lakemary is an investment in the future of those we support. With your help, we have been able to:

Build a New State of the Art Psychiatric Residential Treatment Facility

Raise Money Needed for a New Playground

Improve Residential Facilities

Build Partnerships in the Community

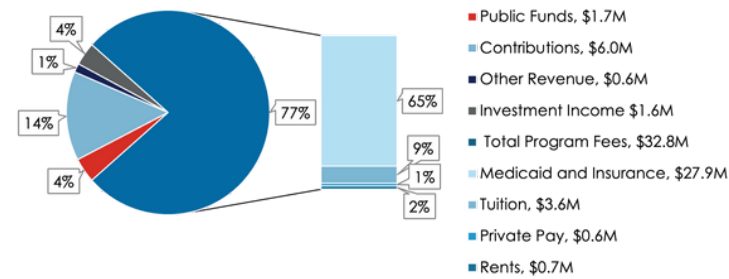


Looking Ahead

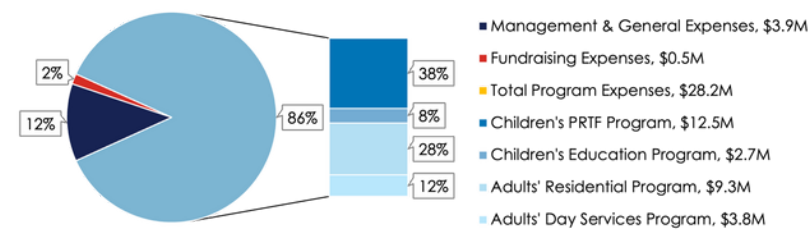
As we look to the future, we are excited about the possibilities that lie ahead with expansion into Johnson County and of course, the Ursuline Legacy Park. With your continued support, we can expand our programs, reach more individuals in need, and create even greater opportunities for those we support. Together, we can make a lasting impact on children and adults with intellectual and developmental disabilities.

2024 Financial Highlights

FY 2024 Revenues & Support
Program Fees



FY 2024 Expenses
Program Expenses



A complete copy of the audited financial statements is available upon request from Lakemary Center, Inc.

FAST FACTS

over **100**
Children supported at Lakemary this year

over **200**
Adults supported at Lakemary this year

How YOU made a difference



We are thrilled to share the incredible impact of your generosity on Lakemary. Thanks to your support, our 40th Annual Lakemary Golf Classic and our first Boots & Bowties event were resounding successes, raising over \$200,000! These funds are pivotal in helping us enhance the lives of the children and adults we support.

Building an Inclusive Playground

One of the exciting projects your donations will fund is the construction of an inclusive playground for our students. This playground will be a place where children of all abilities can play, learn, and grow together. It will provide a safe and engaging environment that fosters physical activity, social interaction, and developmental growth.

Creating a Music Garden

In addition to the playground, we are also developing a music garden for the adults we support. This unique space will offer a sensory-rich environment where individuals can explore and enjoy the therapeutic benefits of music. The music garden will be a place of joy, creativity, and relaxation, enhancing the well-being of our clients.

Crisis Stabilization Grant INSTRUMENTAL in making a difference

Lakemary is excited to announce that we've received a \$316,000 Crisis Stabilization grant from the Kansas Department for Aging and Disability Services (KDADS). This marks the second consecutive year KDADS has awarded funding to support our efforts in providing critical mental health resources for individuals with intellectual and developmental disabilities (IDD). With their ongoing support, we're expanding our crisis services, building stronger community partnerships, and equipping our staff with the tools needed to make a lasting impact.

In 2025, this grant will allow us to grow our team by adding a Board Certified Behavior Analyst (BCBA), Crisis Therapist and a Crisis Case Manager further enhancing our ability to address complex behavioral needs and provide effective crisis intervention. These new positions will strengthen our capacity to support individuals and families during challenging times. We're incredibly thankful for KDADS' continued partnership and their commitment to helping us create a safer, more supportive environment for those we support.

Childrens Parent Support Group offers HOPE

Lakemary Center announced the launch of a new Parent Support Group program. This program is designed to provide parents of a high need child with a supportive environment where they can gain valuable insights and skills.

Facilitated by experienced, licensed therapists, each support group covers a range of topics crucial for parents, including strategies for supporting children with autism, intellectual disabilities,

and various mental and physical health concerns. Parents will have the opportunity to learn therapeutic skills, share their experiences, and discuss their concerns. This environment is designed to foster open communication and mutual support.

The support group meets bi-weekly from 5-6:30pm at Lakemary, Paola, KS or via Teams. For more information contact Kathleen.McGrath@lakemary.org, Senior Director of Clinical Services.

The Kirk Davis Center

A Beacon of Hope: All made possible because of YOU

We are thrilled to announce the opening of the Kirk Davis Center, Lakemary's new Psychiatric Residential Treatment Facility. This state-of-the-art, 40-bed facility stands as a testament to our unwavering commitment to children with intellectual and developmental disabilities from all over the nation. It represents a significant milestone in our rich history and honors the 42-year legacy left by CEO, Kirk Davis, while looking to the future of Lakemary.

A Comprehensive Approach to Care

The Kirk Davis Center offers a wide range of therapies all under one roof, ensuring that our students receive the holistic care they need. The facility is also equipped with:

- **Discovery Center:** A space designed to stimulate curiosity and learning through interactive activities.
- **Play Factory:** An area dedicated to therapeutic play, fostering social skills and emotional growth.
- **Library:** Providing a quiet space for reading and reflection, supporting both educational and recreational needs.
- **Computer Lab:** Offering access to technology for learning and skill development.

Our partnership with Garmin is CHANGING lives

We are thrilled to highlight our impactful partnership with Garmin, a company that has truly embraced our mission and made a significant difference in the lives of the adults we support. Garmin employs 20 adults from both our Olathe and Paola locations, providing meaningful employment opportunities that empower our participants and help them achieve greater independence. This collaboration not only benefits the individuals directly involved but also enriches the entire Lakemary community.

Beyond employment, Garmin has shown steadfast support for our initiatives by sponsoring key events such as the Lakemary Golf Classic and Boots & Bowties. Their generous contributions and active involvement in these events have been instrumental in raising awareness and funds for our programs.

We are deeply grateful for Garmin's commitment to our cause and look forward to continuing this fruitful partnership. Together, we are making a lasting impact and creating a brighter future for the adults we serve. Stay tuned for more updates on our collaboration with Garmin and other exciting partnerships that help us fulfill our mission.

Debt-Free Achievement

Thanks to the generosity of our donors, we were able to open this beautiful new facility, debt-free, with over \$11 million raised for the project. Your support has made it possible for us to create a nurturing environment where children can thrive and reach their full potential.

A BRIGHT Future Ahead

The Kirk Davis Center is more than just a building; it is a beacon of hope for the future. It symbolizes our dedication to providing the highest quality of care and our commitment to the well-being of the children we support. With this new facility, we are better equipped than ever to support their growth, development, and overall well-being.

