



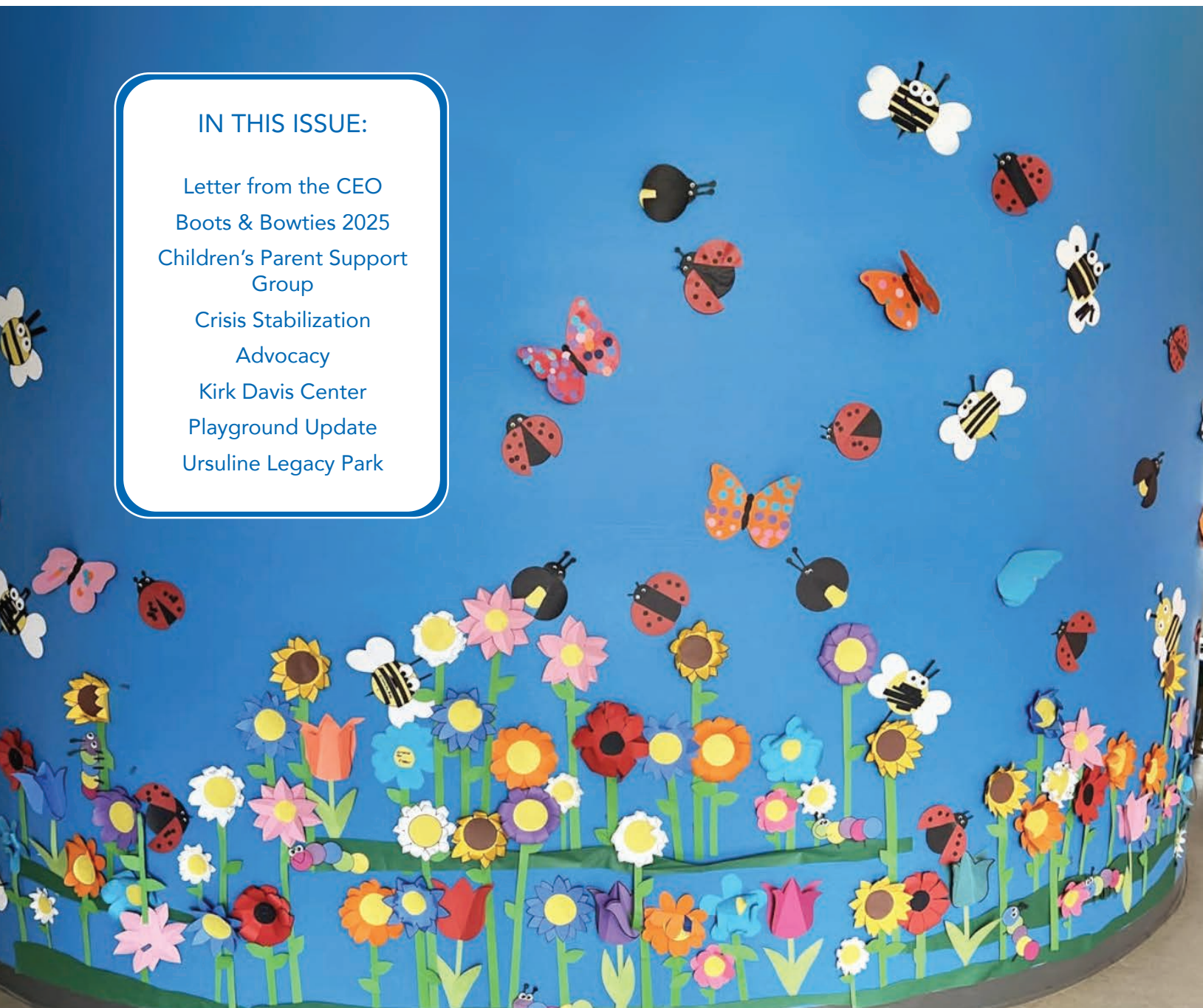
IMPACT REPORT, March 2025

our mission:

Empowering children and adults with intellectual and developmental disabilities to achieve their individual potential.

IN THIS ISSUE:

Letter from the CEO
Boots & Bowties 2025
Children's Parent Support
Group
Crisis Stabilization
Advocacy
Kirk Davis Center
Playground Update
Ursuline Legacy Park



★ letter from the CEO

Exciting Changes at Lakemary this Spring!



Spring is a time of renewal, and at Lakemary Center, there's much to celebrate! One of the most exciting developments is the upcoming installation of new playgrounds and musical gardens on our Paola campus. These projects, made possible through generous donors and community support, will create spaces filled with laughter, learning, and connection for years to come.

Another major focus this year is the Ursuline Legacy Park, a tribute to the visionary Ursuline Sisters whose dedication laid the foundation for Lakemary. This park will celebrate their pioneering spirit while creating an inclusive, welcoming space where individuals of all abilities can gather and enjoy the outdoors. With planning underway, we look forward to bringing this meaningful project to life this Spring.

Advocacy is at the heart of who we are. Lakemary will always be a fierce advocate for children and adults with disabilities, ensuring their voices are heard and their needs prioritized. And we are stronger because families, friends, staff, and Lakemary's Board of Directors stand with us, working together to drive change at the state and national levels. Our website's Advocacy Tab offers ways to stay involved and make a difference.

As we embrace the promise of spring, we are reminded that working together creates lasting impact.

Thank you to all who support Lakemary's mission—you are changing lives and shaping a stronger, more inclusive future!

With heartfelt gratitude,

Teddi Hernandez
President & CEO

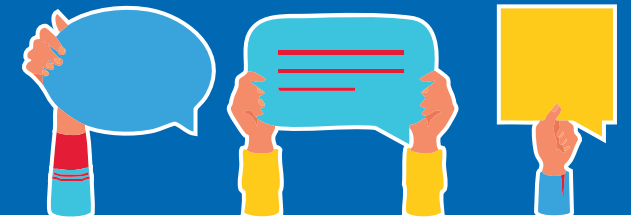


Get ready for boot stompin' fun our Boots & Bowties Gala is almost here!

We are thrilled to invite you to Boots & Bowties on April 5th at The Lodge at Ironwoods from 6 PM to 10 PM! Enjoy an unforgettable evening with live music by Midnight Rodeo and dinner by Joe's KC. We extend our heartfelt thanks to **Straub Construction** as our presenting sponsor and helping to make this event possible. Don't miss out on this fantastic opportunity to support Lakemary Center. You can purchase tables and tickets at <https://onecau.se/lakemary>. We look forward to seeing you there!



Lakemary Center recently hosted a virtual **Parent Forum** for families with children in the residential program. During the forum, parents had the opportunity to ask general and department-specific questions about topics such as administration, case management, food services, nursing, therapy, and more. The discussion provided valuable insights and updates, fostering open communication between families and Lakemary staff.



crisis stabilization

Lakemary Center's new Crisis Stabilization Program provides urgent, short-term support for individuals with intellectual and developmental disabilities (IDD) experiencing behavioral or psychiatric crises. Lakemary strengthens our community response by providing training sessions for Officers, First Responders, Public Safety Personnel and School Personnel.

A new dedicated crisis line, **913.755.5937** is available weekdays during business hours, with a 24/7 recording for follow-up requests. For more info visit <https://lakemary.org/crisis-stabilization/>

YOU can help make a difference!

The Power of Community: Lakemary's New Advocacy Program

Lakemary Center is launching The Power of Community, an advocacy initiative empowering parents, staff, and community members to champion the rights of children and adults with intellectual and developmental disabilities (IDD).

Through a dedicated webpage, we provide **legislative updates, advocacy events, and tools** to help you take action.

Get involved by:

- **Staying Informed** – Keep up with policy changes affecting our community.
- **Engaging in Advocacy** – Attend events, rallies, and meetings.
- **Taking Action** – Use our resources to communicate with lawmakers.

Advocacy is strongest when we unite. **Join us** in ensuring the needs of people with IDD remain a priority at every level of government.

Visit our website to get involved today: <https://lakemary.org/advocacy/>.



A Standard of Excellence

Lakemary Center received outstanding results from the Kansas Department for Aging and Disability Services (KDADS) This achievement reflects the dedication of the Lakemary team in maintaining a safe, nurturing environment.

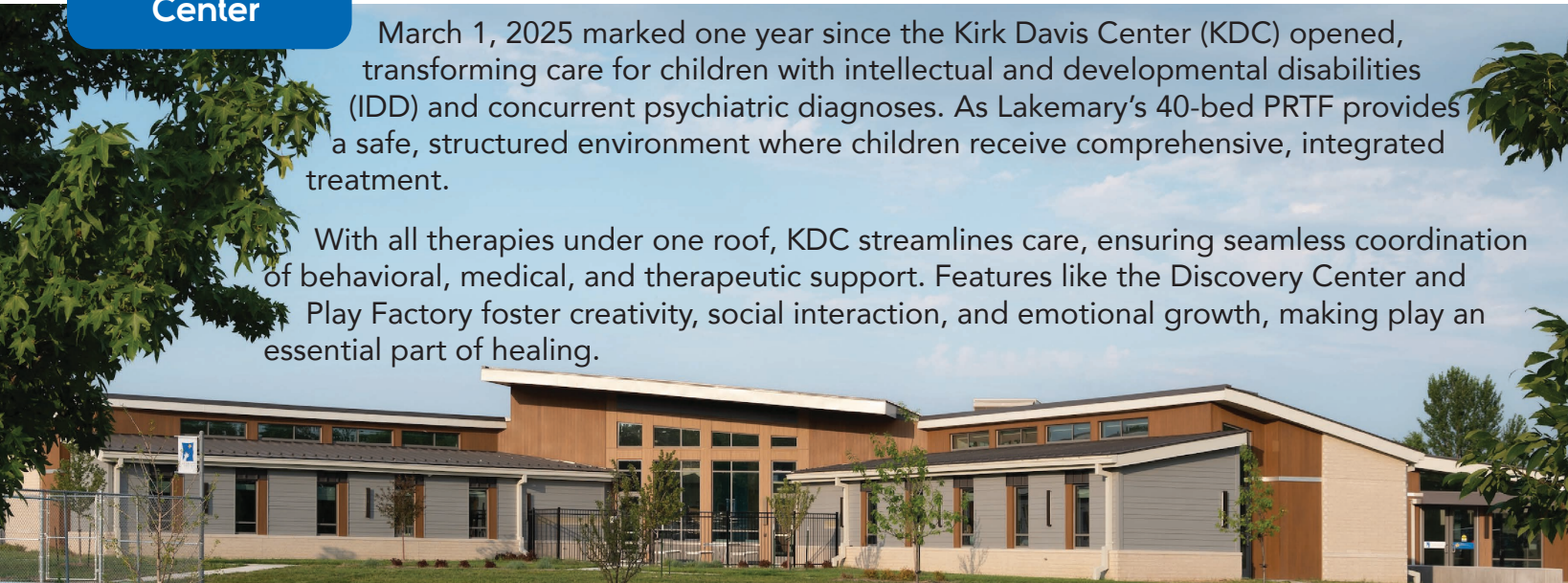


A Year of Hope: Celebrating the Kirk Davis Center

In its first year, the Kirk Davis Center, our Psychiatric Residential Treatment Facility (PRTF) has made a profound impact, thanks to our dedicated staff and generous supporters. As we celebrate this milestone, we look forward to continuing our mission—providing hope, stability, and brighter futures for the children we Support.

March 1, 2025 marked one year since the Kirk Davis Center (KDC) opened, transforming care for children with intellectual and developmental disabilities (IDD) and concurrent psychiatric diagnoses. As Lakemary's 40-bed PRTF provides a safe, structured environment where children receive comprehensive, integrated treatment.

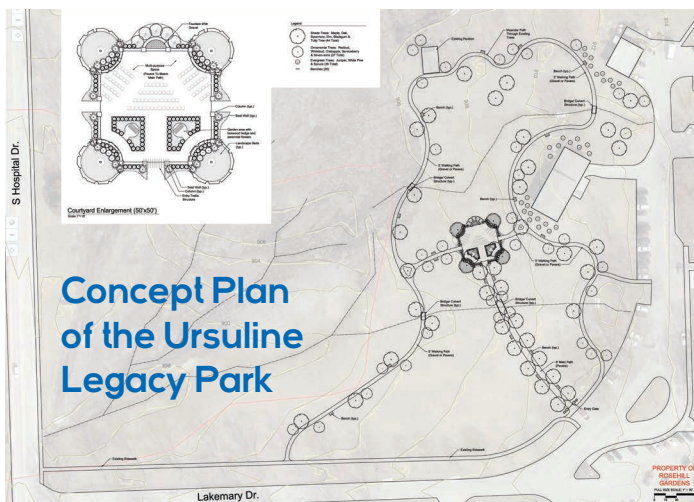
With all therapies under one roof, KDC streamlines care, ensuring seamless coordination of behavioral, medical, and therapeutic support. Features like the Discovery Center and Play Factory foster creativity, social interaction, and emotional growth, making play an essential part of healing.



Full of Fun For Everyone!

Thank you to Friends of Lakemary that have shown support for our children and adult programs. Lakemary Center has a new inclusive custom playground that will be installed this Spring that was designed to bring joy and excitement to the children that are in our Psychiatric Residential Treatment Facility. This new playground will meet all functional, environmental and safety requirements. The colorful play components include a communication board, swings, slides, and spinners. A sport game court includes Basketball, Four Square, Hopscotch, Pickleball and Volleyball. Two therapy musical gardens that combine music and sensory experiences are also planned for both the children and adults to enjoy.

Full of fun for everyone is just around the corner! Happy Spring!



Creating a place to honor the legacy of the Ursuline Sisters who had the vision to create Lakemary. We want to honor the legacy of the Ursuline Sisters with the creation of the Ursuline Legacy Park. Our beautiful park will have a meandering walking trail across 2.5 acres on the Lakemary campus.

Artifacts from the convent will be nestled within the park as reminders of the rich history of the Ursuline Sisters and their history with Lakemary. Our hope is to build a sustainable environment for many years to come. A beautiful environment to deepen the ties with the Ursuline Sisters of Paola who came together to love and support children with special needs over 50 years ago.